



south central los angeles  
regional center

sclarc  
scene

november 2015

issue #3

vol.13



paul r. williams (1894–1980) influenced all strata of society. Led by his social consciousness, he believed that individuals could make a difference.

## paul r. williams memorial unveiled at legacy plaza

On Thursday, October 29, 2015, the Paul Revere Williams Memorial was unveiled at South Central Los Angeles Regional Center's new headquarters—Legacy Plaza. "This is not only a historic moment, but also a transformational moment for this community because we are able to honor our past with the bas relief and also educate future generations whose roots lie deep within this community. We thank Georgia Toliver for her excellent vision and passion to tell the story of Paul Williams," said Dexter Henderson, CEO for SCLARC.

When West Adams-based artist-sculptor Georgia Hanna Toliver, known as Tolanna, was commissioned by Community Impact Development (CID) and South Central Los Angeles Regional Center to create a memorial sculpture of famed 20th century African American architect Paul R. Williams, she knew immediately that she would incorporate his own architecture into the larger-than-life portrait.

"Williams was an artist. His architecture was multi-dimensional and so was his life," Toliver said. "Since this sculpture would be in the heart of the West Adams Historic District,

see memorial on page 5



friends of sclarc hosted its 11<sup>th</sup> Annual golf tournament & dinner. (See page 4)

### inside

sclarc's consumer advisory committee (cac) showcases cultural diversity at annual fair **2**

fos raises \$110K at 11<sup>th</sup> annual golf tournament **4**

the family resource center hosts its first literacy lab **6**

## consumer advisory committee spotlight: the cac showcases diversity and culture during annual fair

By **DESIREE BOYKIN** \* *SCLARC Consumer Advocate*

One of the goals of the Consumer Advisory Committee (CAC) is to give information to the SCLARC consumers on a wide range of subjects. On September 17, 2015, the SCLARC Consumer Advisory Committee (CAC) held its first Cultural Fair in order to celebrate the different cultures of, and diversity among, SCLARC consumers, vendors and staff. Executive Director Dexter A. Henderson opened the program, as he welcomed everyone and thanked all in attendance for supporting the CAC. He commended vendors and Independent Living Services providers for assisting consumers with their transportation needs so that they can be more fully included in the community.

CAC member Antwan Jones welcomed guests in many different languages, encouraging the audience to repeat the greetings. Alyssa Jackson, president of the CAC, shared the purpose of the Cultural Fair in English as CAC member Elva Murillo interpreted the purpose in Spanish. The CAC members sang “We Are The World” and then asked the audience to join in on the singing. FRC Specialist Marissa Chutan and Parent Advocate Crystal Smith led the audience in many different dances from around the world.

The two guests speakers for the event were Mrs. Lara Okunubi and representatives from the consulate of Malaysia. Mrs. Okunubi compared the differences between the quality of services for disabled adults in her native Nigeria to those in the United States. She shared, for example, how adults with disabilities in Nigeria have to beg on the streets for food and the supplies they need for everyday survival. She led the group in the famous “I Am Somebody” chant by Rev. Jesse Jackson. She inspired the audience by reminding them they can do anything they put their minds to doing. “If you change the way you see things,” she said, “you change what you see.” The representatives from the Consulate of Malaysia also spoke about diversity and disability.

Afterwards, everyone went around the room to look at the informational cultural boards created by the CAC members and vendors. There were even food samples from the countries represented. The program ended with a dance in which all the CAC members did the Marcarena and the Wobble. Everyone had a very good time. The CAC thanks SCLARC’s Family Resource Center Program Manager Monique Watts, Marssia Chutan, Crystal Smith, SCLARC’s Chief of Community Services Dr. Kim Bowie; the Community Services staff and all the service coordinators who supported this event and volunteered their time in order to make the Cultural Fair a huge success and one of the CAC’s best programs ever.



consumer advocate desiree boykin introduces the representative from the malaysian consulate.



Left, cac members, service providers and sclarc staff completed cultural boards to showcase the unique aspects of their countries, hometowns, and cultures. sclarc’s frc team members crystal smith and marssia chutan presented dances from around the world. Far right, cultural fair guest speaker mrs. lara okunubi and karla melgar, of ideal program services, smile for the cameras in traditional nigerian attire.



## sclarc launches its charitable funds program

By MAURA GIBNEY

*Chief Advancement Officer, SCLARC*

It is SCLARC's mandate to ensure that the 13,500 children and adults diagnosed with developmental disabilities we serve receive the support they need to live as independently as possible, remain in their own communities, and achieve their fullest potential. While the majority of SCLARC's services are provided through a contract with the Department of Developmental Services (DDS), many vital supports fall outside of the scope of state funding. Having served South and Southeast Los Angeles for over 40 years, SCLARC knows supporting the entire family is needed in order for our clients to reach their goals.

In an effort to meet the needs of our stakeholders, SCLARC has recently launched a fundraising campaign to support various initiatives that improve the overall well being of our clients and their families. While 14 services are supported through the Charitable Programs Fund, a few can be highlighted for their vital importance to our families. The Family Resource Center (FRC) serves families caring for children diagnosed with developmental disabilities and delays. Parent Advocates offer parents support in understanding and coping with their child's diagnosis. The SCLARC Charitable Programs Fund will provide funding for the expansion of advocacy and education programs, building better parent leaders, and will continue funding for Sibling Support Groups, which offer peer support to children with a sibling who is disabled.

SCLARC's early developmental screening program offers at risk children, between birth to five years old, increased access to screenings for developmental delays and ensures that children are connected to invaluable early intervention services. The earlier children who are at risk for autism connect with specialized support services, the more successful they will be in addressing their delays. To sustain this important program, long-term funding is needed. In addition, the purchase of an outreach van, to be used for mobile screenings, will further SCLARC's effort to reach those children who have fallen through the cracks, providing early screenings at parks, libraries and in children's home communities.

The Consumer Advisory Committee (CAC) is comprised of SCLARC clients whose mission is to raise awareness about developmental disabilities and to provide resources and education to peers. The support of the Fund will offer the CAC expanded advocacy and education trainings, and increased opportunities for socializing in the community with other SCLARC adult consumers.



# friends of sclarc celebrates 11<sup>th</sup> golf tourney

By **MARIA FIGUEROA**  
*Community Relations Specialist*



On Friday, October 9, 2015, Friends of SCLARC (FoS) celebrated its 11<sup>th</sup> Anniversary Golf Tournament by welcoming 24 sponsors, 100 golfers and 180 dinner guests. Together, the event raised more than \$110,000 for the organization which supports the consumers of South Central Los Angeles Regional Center. The proceeds raised at the annual Friends of SCLARC Golf Tournament and Awards Dinner are used to support consumers and their families who are in crisis, have emergency situations, need one-time rental assistance, or require specialized medical services.



Friends of SCLARC's Board of Directors would like to thank its donors, community partners, volunteers and "friends" for the commitment they have made to its organization, SCLARC's consumers and their families. Malcolm Bennett, FoS Board President says, "Our donors and and partners just don't know how much SCLARC's consumers and families appreciate the support they get from FoS during the holidays, when their children are going back to school and in times of dire need. I speak for myself and my fellow board members when I say we deeply appreciate the donors, golfers and friends who come back year after year in support of this great cause. We could not do it without you."



FoS is looking forward to seeing you at next year's tournament which is slated for September 23, 2016. If you would like information on sponsorship opportunities, visit us at [www.friendsofsclarc.org](http://www.friendsofsclarc.org).



the pictures above prove that the consumer golf clinic and tournament was a big hit with the participants!



clockwise, tourney golfer thomas aaron, sclarc boardmembers and exec staff, friends of sclarc's golf tournament dinner guests.



## paul r. williams memorial unveiled ... (continued from page 1)



paul williams bas relief creator and sculptor "tolanna," georgia tolliver

lived in and around West Adams his whole life. For 27 years, I've lived one block from the home he built for his family. I was born the year the GSM building was erected, my late husband worked at GSM, we met in a Paul Williams building."

Paul Revere Williams (1894 -1980) influenced all strata of society. Led by his social consciousness, he believed that individuals could make a difference. His achievements, awards and recognition reflect his contributions to the betterment of mankind. A master of all popular styles—Tudor, Moderne, Spanish, Colonial—Williams's unique vision and design elements made these styles his own. Whether designing modest homes or luxurious estates, they were all designed to suit the lifestyle of the families who would live in them.

"It is a tremendous honor to be part of a multi-dimensional project that encompasses history, architecture, culture, and revitalizing Historic West Adams. And translating all this into what I love most—sculpture," said Toliver.

The Memorial Plaza will be open for public viewing beginning November 16, weekdays from 9:00 a.m. to 3:00 p.m.

*to learn more about paul r.  
williams go to  
[www.paulrwilliamsproject.org](http://www.paulrwilliamsproject.org)*

what better way to tell his story than through his own artistic contributions."

The result of Toliver's vision and year-long work is a breathtaking bronze relief, approximately 9' by 7', that is the featured attraction in SCLARC's campus plaza which transitions two significant community buildings: the historic 1949 Golden State Mutual Building (GSMB), designed by Williams, and the new corporate offices of South Central Los Angeles Regional Center (SCLARC) designed by AE3 Partners.

"Tolanna" says she felt connected to this project from the very beginning. "Williams



far left, malcolm bennett, president of the friends of sclarc board, stops for a photo-op with sclarc and community impact development ii (cid ii) staff. pictured with mr. bennett, from left are sclarc fiscal assistant sarai cruz, director of community services marsha mitchel-bray, cid foundation supports assistant silver foreman (first row) and cid foundation supports manager hillary henderson, sclarc community relations specialist maria figueroa (first row), executive assistant deanna corbin, executive director dexter a. henderson and director of consumer supports reuben lee, top row.

## paul r. williams memorial unveiling candid camera



**top left:** (from left) sclarc's director of consumer supports reuben lee, director of community services marsha mitchell-bray, executive director dexter a. henderson, sculptor georgia tolover, cid foundation supports manager hillary henderson, legislative aide tania picasso and ae3 partners founder doug davis.



**bottom left:** ivan houston, former chairman of the board for golden state mutual insurance company; ivan a. houston (his son), henderson, pam Houston, georgia tolover, friends of sclarc board president malcolm bennett, kathi houston-berryman, and leslie houston.

**Bottom right:** georgia tolover with her family—sterling (far left), nephew jeremy and sister ginger.

## california's lanterman act turns

Next year, the regional center system will celebrate a huge milestone as the Lanterman Act turns 50. A half-century ago, people with intellectual disabilities were “patients” primarily living in large, institutional settings like state hospitals. Assembly Bill 691 changed that and created the regional center system so that people with special needs could stay, and be fully included, in their communities. Assembly Bill 691 was enacted in 1965, and signed by Governor Edmund G. (Pat) Brown. The bill authorized the establishment of two pilot regional centers for persons with intellectual disabilities under a contract with the State Department of Public Health. The centers were to address unmet needs, assist in service development, maintain records, and provide systematic assessment, diagnosis and follow-up.

In 1966, two pilot regional centers were opened at Children’s Hospital of Los Angeles and Aid for Retarded Children in San Francisco. Parents of children with special needs and other concerned citizens were also at the forefront of a movement to ensure proper mental and developmental health care in South L.A. One such trailblazer was Dr. J. Alfred Cannon, whose life’s mission was improving mental health care for low-income, minority populations. In 1973, Dr. Cannon founded the Central City Community Mental Health Center, one of the first comprehensive mental health agencies to operate in South Los Angeles. A year later, the agency was awarded a contract to develop South Central Los Angeles Regional Center (SCLARC).

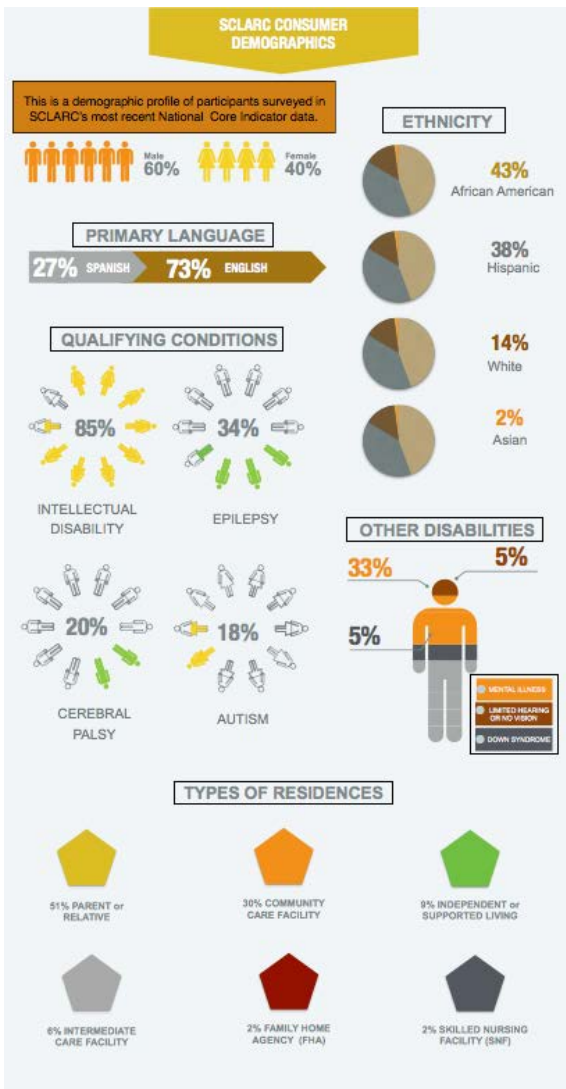


frank d. lanterman

see lanterman on page 8



## why are sclarc's national core indicators so important?



Specifically, the National Core Indicators measure outcomes that are important to individuals with developmental disabilities and their families such as good health, choice of home, and full participation in the community through employment and other activities.

South Central Los Angeles Regional Center 73% spoke English and 27% spoke Spanish.

The infographic also illustrates that those surveyed who receive services from South Central Los Angeles Regional Center in CS2 were diagnosed with the following conditions that qualify them for services—intellectual disability (ID) 85%, autism spectrum disorder (ASD) 18%, cerebral palsy (CP) 20%, and/or epilepsy 34%. The graphic also shows the other types of disability of people surveyed which included: mental illness 33%, brain injury 1%, limited or no vision 5%, hearing loss 2%, Down syndrome 5%, other 4%, and 13% had no other disability.

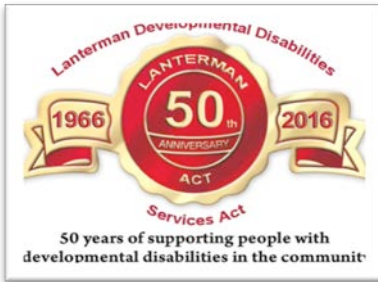
While it should be noted that the National Core Indicator (NCI) data is only a snapshot compiled from 400 South Central Los Angeles Regional Center (SCLARC) stakeholders who were surveyed, the data is helpful in determining areas that SCLARC should target for improvement over the next measurement period. This data, in conjunction with Purchase of Service data, can help focus SCLARC's priorities. Those priorities are also informed by the following criteria:

- The priority reflects those most affected (people with disabilities and their families);
- The priority area is susceptible to change within the measurement period;
- Change or reform within the priority area can be accomplished within available resources.

Priorities should be reassessed each year. Some priorities may result in multiyear efforts and others may be successfully addressed within the year. Selecting priorities does not mean that other aspects of the data are not important – they merely reflect the major targets of change over the next measuring period. Once priorities have been set, SCLARC and its stakeholders—including the Consumer Advisory Committee (CAC), the Parent Advisory Committee (PAC), the Vendor Advisory Committee (VAC) and the agency's Staff Advisory Committee (SAC) can begin to concentrate on those strategies that are most likely to bring about improvement.

The infographic demonstrated that of the people surveyed during the period of CS2 (which is FY 2011-12, the latest survey data available), 60% were males and 40% were females. Those surveyed reported their ethnicity as being 2% Asian, 43% Black or African American, 14% White, 38% other, 1% two or more, and 1% didn't know; 38% were identified as Hispanic. The primary language of people surveyed from

## lanterman act turns 50 ... continued from



The catalyst for Dr. Cannon's action came in 1965 as a result of the Watts Riots. The riots exposed just how few resources were actually allocated to mental health issues in the area that was largely African American. At the time, South Los Angeles had the highest incidence of intellectual disability in the county. With the passing of the Community Mental Health Centers Act a few years prior, Cannon gathered a group of 22 African American psychiatrists in order to begin remedying the problem. Together, the cadre built various medical facilities in South Los Angeles

including the Kedren Community Health Center and Drew Medical School. These new resources made it easier for residents of South Los Angeles to seek mental and developmental health treatment.

At the same time, the two pilot regional centers were beginning to thrive. The 1965-66 budget for the two regional centers was \$966,386. They served a total of 559 individuals in the first year. In 1968, an Assembly study reviewing the effectiveness of the pilot regional center program presented the "Proposal to Reorganize California's Fragmented System of Services to the Mentally Retarded." The report concluded the pilot regional centers were successful and should be expanded statewide. In 1969, Assemblyman Frank D. Lanterman introduced AB225 to extend the regional center network of services throughout the State of California.

---

## national core indicator (nci) data ... (continued from page ?)

Lastly, SCLARC's National Core Indicator survey data detailed the types of residences in which SCLARC consumers live. 51% of SCLARC consumers lived with a parent or relative, 30% resided in community care facilities, 9% were able to live independently or were living with the assistance of supported living services (SLS). Additionally, 6% of the regional center's consumers lived in intermediate care facility, 2% in family homes (FHAs), and 2% in a skilled nursing facility (SNF).

The National Core Indicators (NCI) are a collaborative effort between the National Association of State Directors of Developmental Disabilities Services (NASDDDS) and the Human Services Research Institute (HSRI). The purpose of the program, which began in 1997, is to support NASDDDS member agencies in gathering a standard set of performance and outcome measures that can be used to track their own performance over time, to compare results across states, and to establish national benchmarks. NCI uses a survey to ask our consumers how they feel about the services they get. The survey questions are asked during a meeting with our consumers and their families in order to understand how they feel about the services they get from the State.

Based on the total number of adults (age 18 and over) who are receiving regional center services, it was determined that a target number of 400 surveys per regional center would provide a valid sample for this analysis. People who were living in a developmental center were not part of the sample. An additional group of people who had moved from developmental centers into the community in the past five years was selected so that their results could be looked at separately. Overall, the total number of surveys completed in FY 2011-12 (CS2) across the State of California was 8,691.



## sclarc's frc hosts its first literacy lab

A study conducted by researchers at Stanford University tested the language processing of typically functioning 18 and 24-month-old toddlers using pictures, instructions, and eye response. It found that by three years of age, children from high-income families have heard 30 million more words than children from low-income families. The finding that children living in poverty hear less than a third of the words heard by children from higher-income families has significant long-term implications. Researchers concluded that this gap does nothing but grow as the years progress, ensuring slow growth for children who are economically disadvantaged and accelerated growth for those from more privileged backgrounds.

SCLARC's Family Resource Center team wants to make sure our families are aware of this word gap and are gaining ground in the battle against illiteracy while closing the word gap. To do this, the FRC has launched a new Literacy Lab in order to educate SCLARC families about the word gap and create tools that help them promote activities. The Labs are designed to increase opportunities for our youngest consumer to acquire language. Specifically, the program, introduced to stakeholders on October 28, 2015, hopes to increase the receptive, verbal and non-verbal language skills of our consumers ages 0 to five. The goal is to:

- Give parents new and interesting words to use in natural conversations,
- Teach gestures and facial expressions to help children make sense of new words,
- Demonstrate how singing, rhyming and reciting poetry can playfully introduce vocabulary,
- Making learning language skills fun.

The Family Resource Center's staff demonstrates storytelling, puppet shows, sing-a-longs and other verbal games and activities. Parents, in turn, model the activities with their children. Each child is also given a literacy grab bag that contains an activity to promote language.



family resource specialist (left) marssia chutan and parent advocate crystal smith welcome sclarc parents to the Family resource center's first literacy lab

*SCLARC's Literacy Labs are held at 10 a.m. on the 4<sup>th</sup> Wednesday of each month at Legacy Plaza located at 2500 S. Western Avenue, LA, CA 90018*

## sclarc's cac teams up with usc best buddies



USC Best Buddies is a nonprofit organization dedicated to establishing one-to-one friendships between USC students and a student with an intellectual or developmental disability attending a local high school or college aged adults like the members of SCLARC Consumer Advisory Committee (CAC). Best Buddies is an international organization dedicated to facilitating opportunities to create friendships, obtain employment and foster social inclusion for people with special needs. The Best Buddies chapter at USC is directly connected with Lanterman High School and now South Central Los Angeles Regional Center's Consumer Advisory Committee.

USC Buddies have been matched with CAC members. The Buddy pairs will attend events and engage in monthly visits. The goal is for the buddies to recognize themselves for the abilities, not their disabilities and to encourage friendship that empower both buddies in the matched pairs. Most recently, the CAC and the USC Best Buddies held an icebreaker event at the regional center that was captured on film in a new video featuring SCLARC's consumers. If you are interested in participating in the CAC, please call Consumer Advocate Desiree Boykin at 213.743.3071.

### do you know about sclarc's consumer advisory committee?



The CAC members are comprised of SCLARC consumers who identify topics that are important to the group. The CAC also invites speakers to their meetings to address these topics.

South Central Los Angeles Regional Center's Consumer Advisory Committee meetings are held on the fourth Monday of each month.

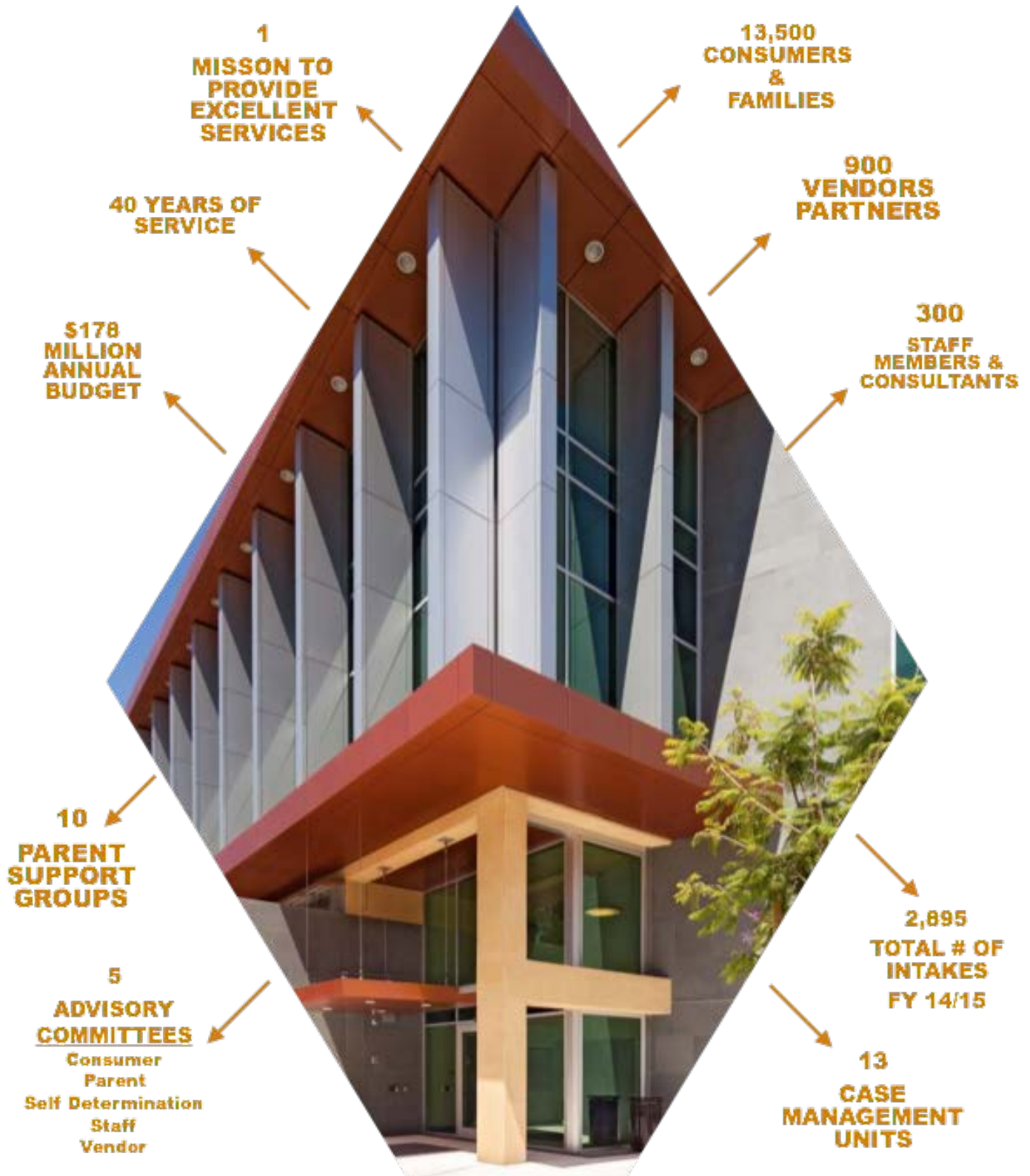
During the holiday season, the November/December meetings may be held on the 3rd Monday of the month.

**WHERE:** SCLARC  
4<sup>th</sup> Floor  
2500 S. Western Avenue  
Los Angeles, CA 90018

**TIME:** 4:00 P.M.-5:30 P.M.

For additional information, you may contact  
Desiree Boykin at (213) 743-3071.

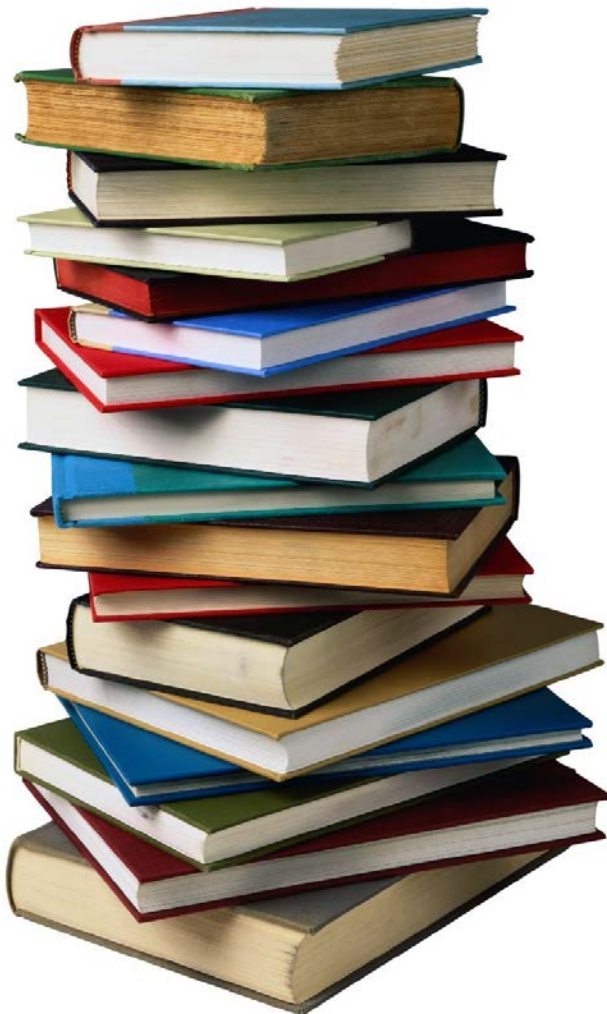




# SCLARC BY THE NUMBERS

**The South Central  
Los Angeles Regional Center's  
Family Resource Center  
Lending Library**

2500 South Western Avenue  
3rd Floor  
Los Angeles, CA 90018  
(213) 744-8882



**South Central Los Angeles  
Regional Center**

*for persons with developmental disabilities, inc.*

## **Now Open**

The FRC Lending Library is available to SCLARC's entire community:

- ◆ Consumers
- ◆ Parents
- ◆ Care-providers
- ◆ Vendors
- ◆ Community partners
- ◆ Consultants
- ◆ Staff

**Open: Monday—Friday**

**9:00 a.m. to 4:30 p.m.**